



Haleigh Hildebrand

VICE PRESIDENT, POLITICAL AND GOVERNMENT AFFAIRS

AHLA & HotelPAC

ABOUT AHLA

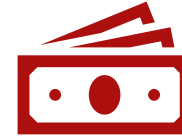


55,000+ PROPERTIES



- **BRANDS**
- **MANAGEMENT COMPANIES**
- **REAL ESTATE INVESTORS**
- **HOTEL OWNERS**

ABOUT HOTELPAC



**2024 CYCLE BUDGET:
\$2 MILLION**



574 DONORS

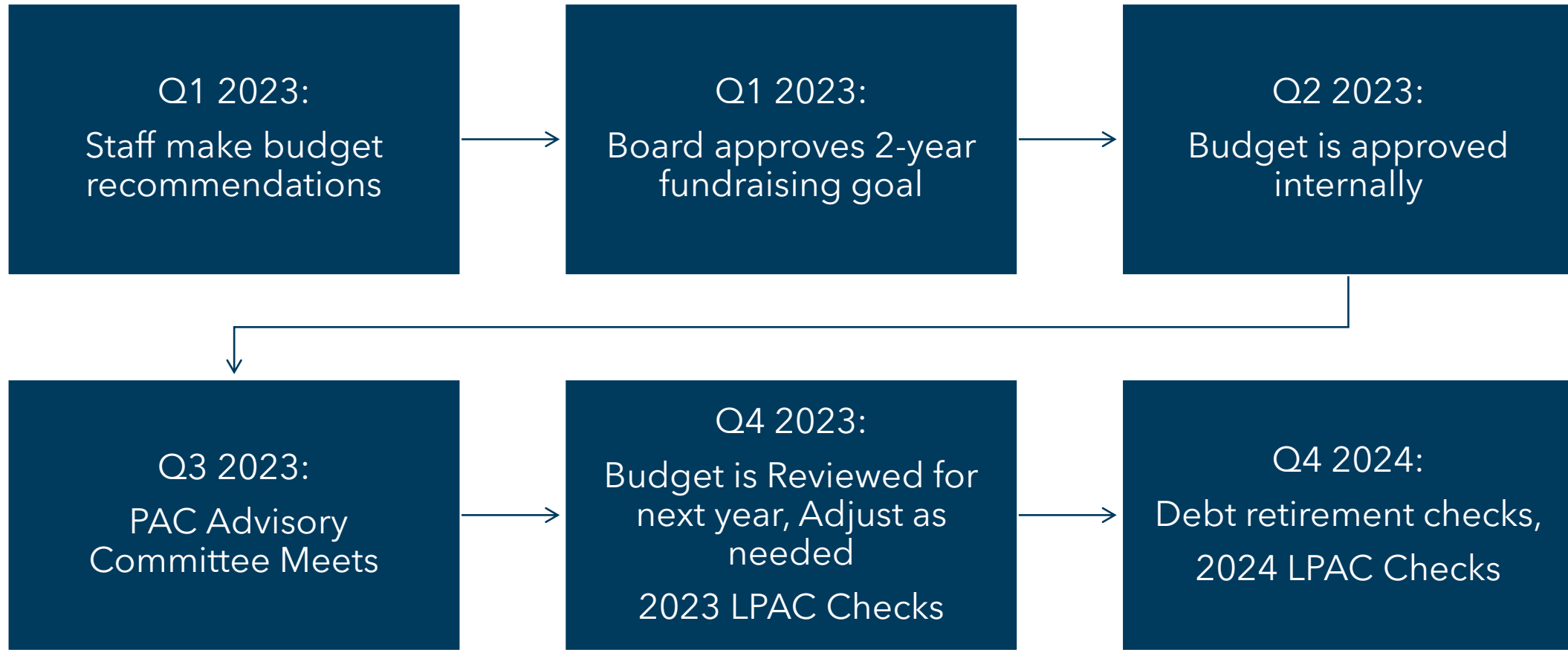


HYBRID PAC

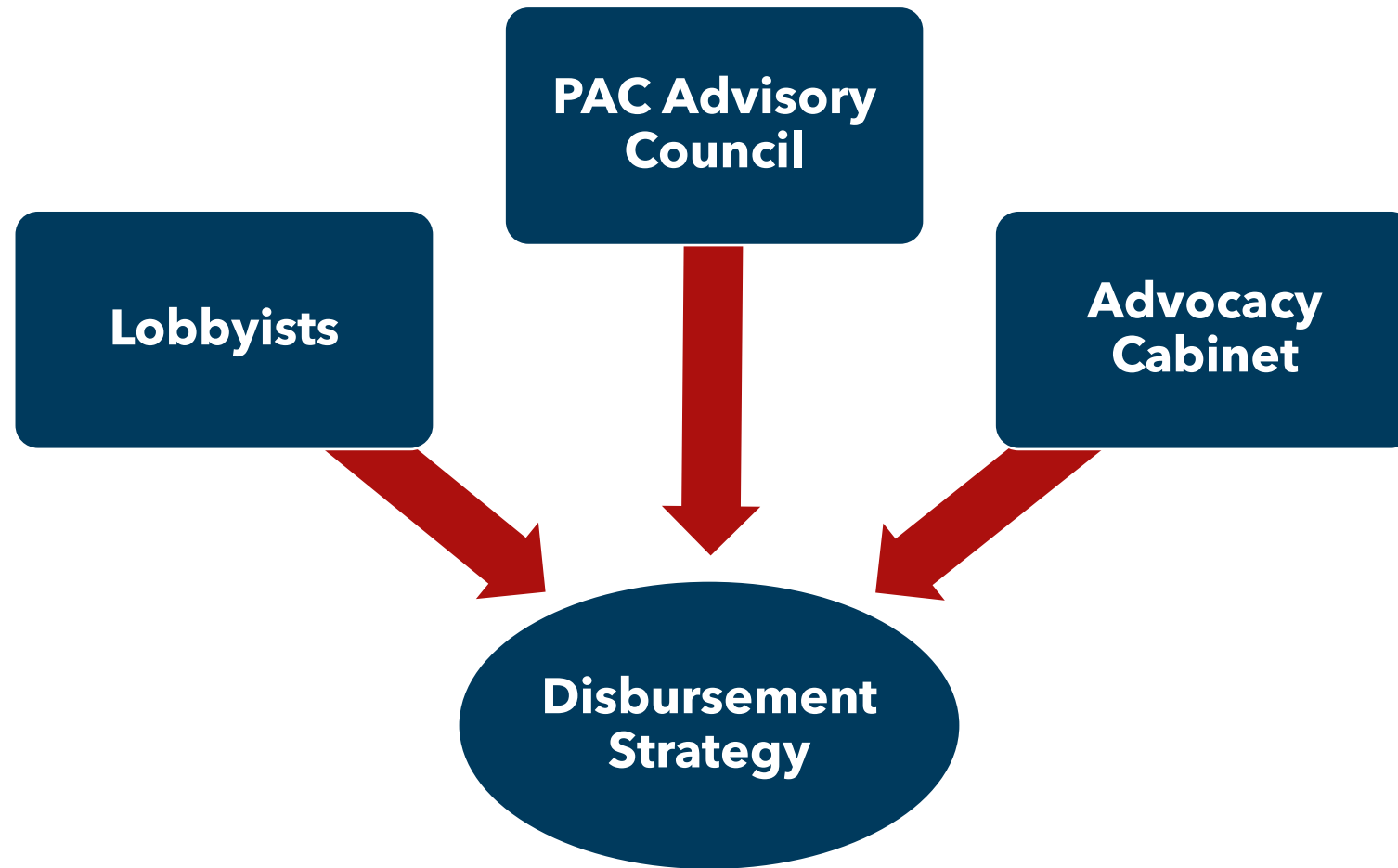


**ELIGIBLES: INDIVIDUAL
MEMBERS**

2023-24 Budget Cycle



Stakeholder Stewardship



Informal feedback

Giving Philosophy



**50/50
D vs. R**



**~90% BUDGET
DISBURSED**



**2-YEAR BUDGET
CYCLE**



**CAMPAIGN \$
FIRST,
THEN LPAC**

Election Year Budget Considerations

Candidate Budget	PAC Program Budget
Key committees	Open seats
Incumbents	Debt retirement
Industry allies	Credit Card Fees
Hoteliers	Events
Unallocated funds	"Emergency reserves"
Alignment on issues	



Disbursements & Events

- Host industry events with AHLA members
- Attend events
- Support members/state association PACs
- PAC to PAC checks