

Better Government for Better Health



The McKesson Employees' PAC Insider Insights

November 2016

What do the 2016 Election results mean for McKesson?



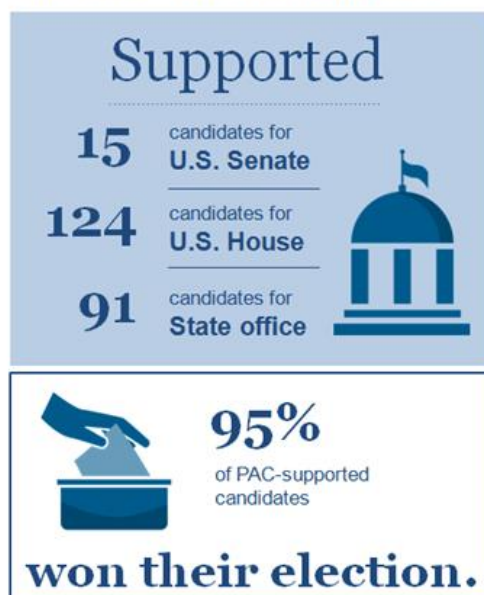
Yesterday, Pete Slone, SVP of Public Affairs, sent a memo to senior leadership on the 2016 election results and the impact on McKesson.

>> [Read it here](#)

PAC-supported candidates win big!

Candidates supported by the McKesson Employees' PAC had a great night on Tuesday. 230 of the candidates the PAC supported were up for election this year. Of those candidates 219, or 95%, won their election. That's a terrific result and one that simply couldn't be accomplished without the strong support of our members. Thank you!

The 2015 – 2016 election cycle.



>> [See the scorecard](#)

Available now...

Post-election webinar recording

Yesterday, McKesson Public Affairs hosted a live webinar to provide analysis of the 2016 Election outcomes and the impact on McKesson and our customers.

Featured panelists included Pete Slone, SVP McKesson Corporate Public Affairs and former Senators Mary Landrieu and Don Nickles.

[Recording Available Here.](#)

Featured Speakers



Pete Slone
Senior Vice President,
Corporate Public Affairs



Mary Landrieu
Former U.S. Senator (D-LA)
Senior Policy Advisor VanNess
Feldman



Don Nickles
Former U.S. Senator (R-OK)
Chairman & CEO The Don
Nickles Group

The McKesson Employees' Political Action Committee (PAC) is an employee organization that supports candidates for political office who are committed to Better Health. With over 1,200 members from across the company and growing, the McKesson Employees' PAC is critical to bringing McKesson's message to Washington, D.C. and state capitols across the country.

Visit us at www.mckessonpac.com to learn more.

Prepared by McKesson Corporate Public Affairs.

For Internal Use Only.

Contributions to the McKesson Corporation Employees Political Fund are strictly voluntary and anyone may refuse to contribute without reprisal. Any guidelines which may be suggested are only suggestions. All are free to contribute more or less than the guidelines, and no one will be favored or disadvantaged in their employment with McKesson because of the amount of their contribution or their decision not to contribute. Contributions from foreign nationals cannot be accepted. Federal law requires political committees to use their best efforts to obtain and report to the Federal Election Commission the name, mailing address, occupation and name of employer for each individual whose contributions aggregate in excess of \$200 in a calendar year.

Contributions or gifts to the McKesson Corporation Employees Political Fund are used for political purposes and are not tax deductible.