

# Artificial Intelligence - Implications for Governance & Public Policy

Every organization that develops or uses AI, or hosts or processes data, must do so **responsibly and transparently.**

**Society will decide which companies it trusts.**

# ARTIFICIAL INTELLIGENCE: Era of Exponential Growth



# Human + Machine: Augmented Intelligence



## PEOPLE

*Excel at ...*

Setting Goals

Common Sense

Value Judgement

+

## MACHINES

*Excel at ...*

Large-scale Math

Pattern Discovery

Statistical Reason

=

## MORE

*Combined we get ...*

Better Decisions

More Confident Answers

Less Biased Results

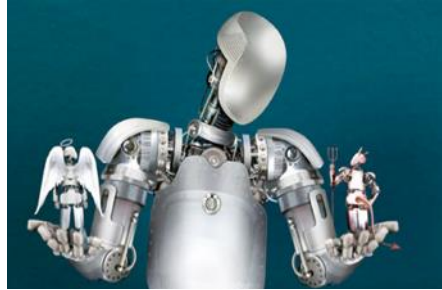
ALL WITHIN AN ETHICAL FRAMEWORK

# IBM's Principles for Trust and Transparency



## PURPOSE

To **AUGMENT** Human  
Intelligence



## OWNERSHIP

Data and insights **BELONG**  
**TO**  
**THEIR CREATOR**



## EXPLAINABILITY

AI systems must be  
**TRANSPARENT AND**  
**EXPLAINABLE**

# ENGAGEMENT



# Engagement with governments

## Potential of “good AI” outweighs the risks

- Over-regulating AI through government intervention freezes innovation

## Measures to take

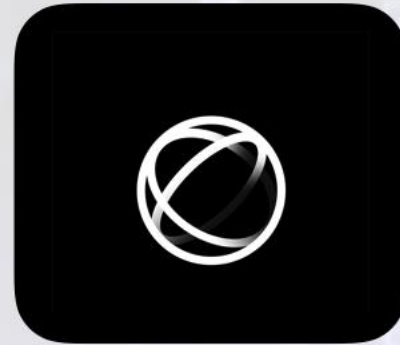
- Working with policymakers and clients to have effective, ethically grounded AI
- R&D support
- Preparing the workforce with the right skills for this new Digital Era – new collar jobs

## MULTIDISCIPLINARY DISCUSSIONS

What is

# WATSON POLICY?

**ISSUES** management and  
**STAKEHOLDER** engagement tool  
that combines **DATA, NEWS**  
and **SOCIAL MEDIA** with **COGNITIVE.**



**IBM** Government and  
Regulatory Affairs



The background is a dark, abstract composition featuring a complex network of glowing orange and blue lines that resemble a circuit board or data pathways. These lines are set against a dark blue and black backdrop, with several out-of-focus, warm-toned bokeh lights scattered throughout, particularly on the right side.

Thank you