

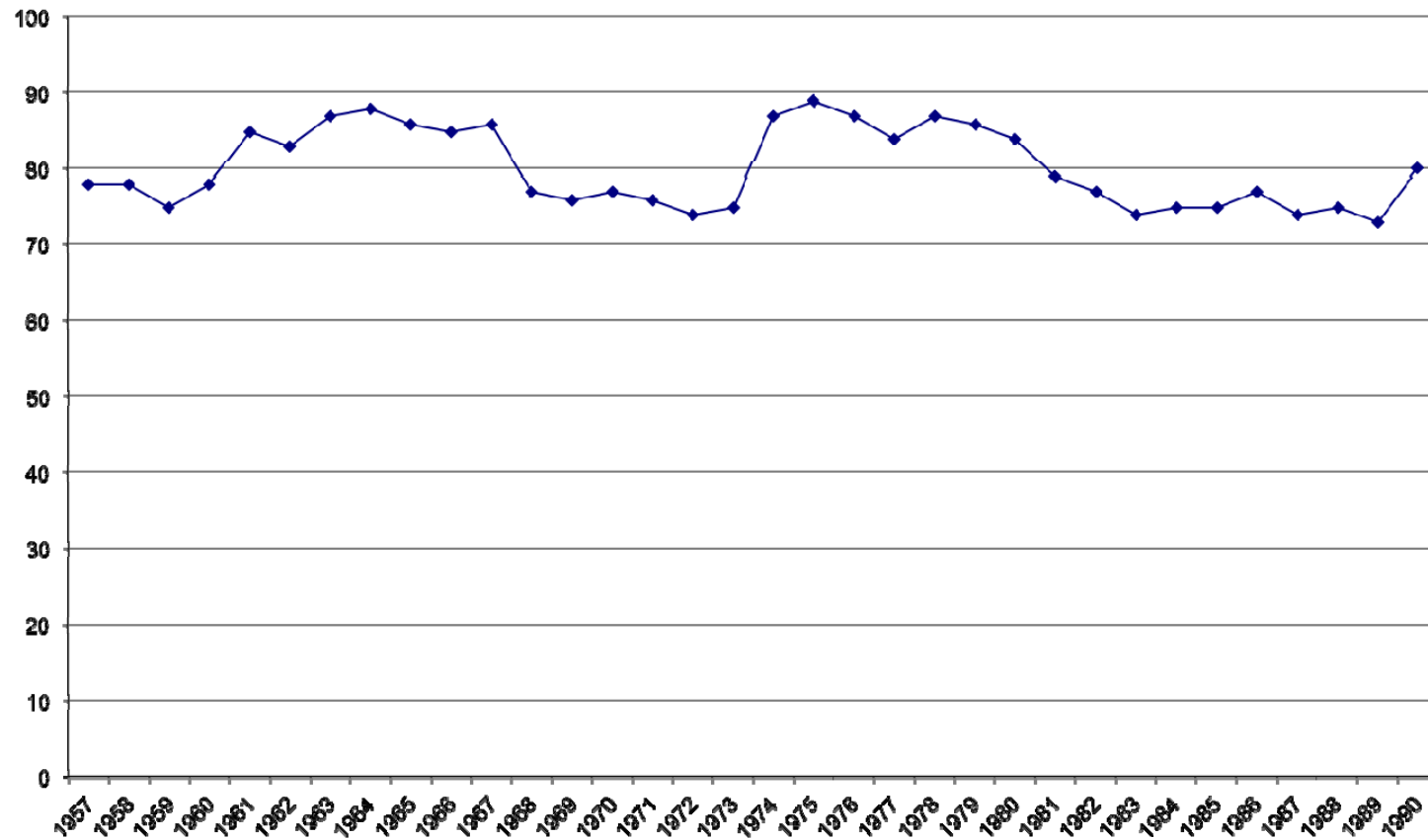
**Trends in Cuban Civil Society:  
Investing and Operating Successfully  
in the Cuban Culture  
July 21, 2015**

**Alejandro de la Fuente**

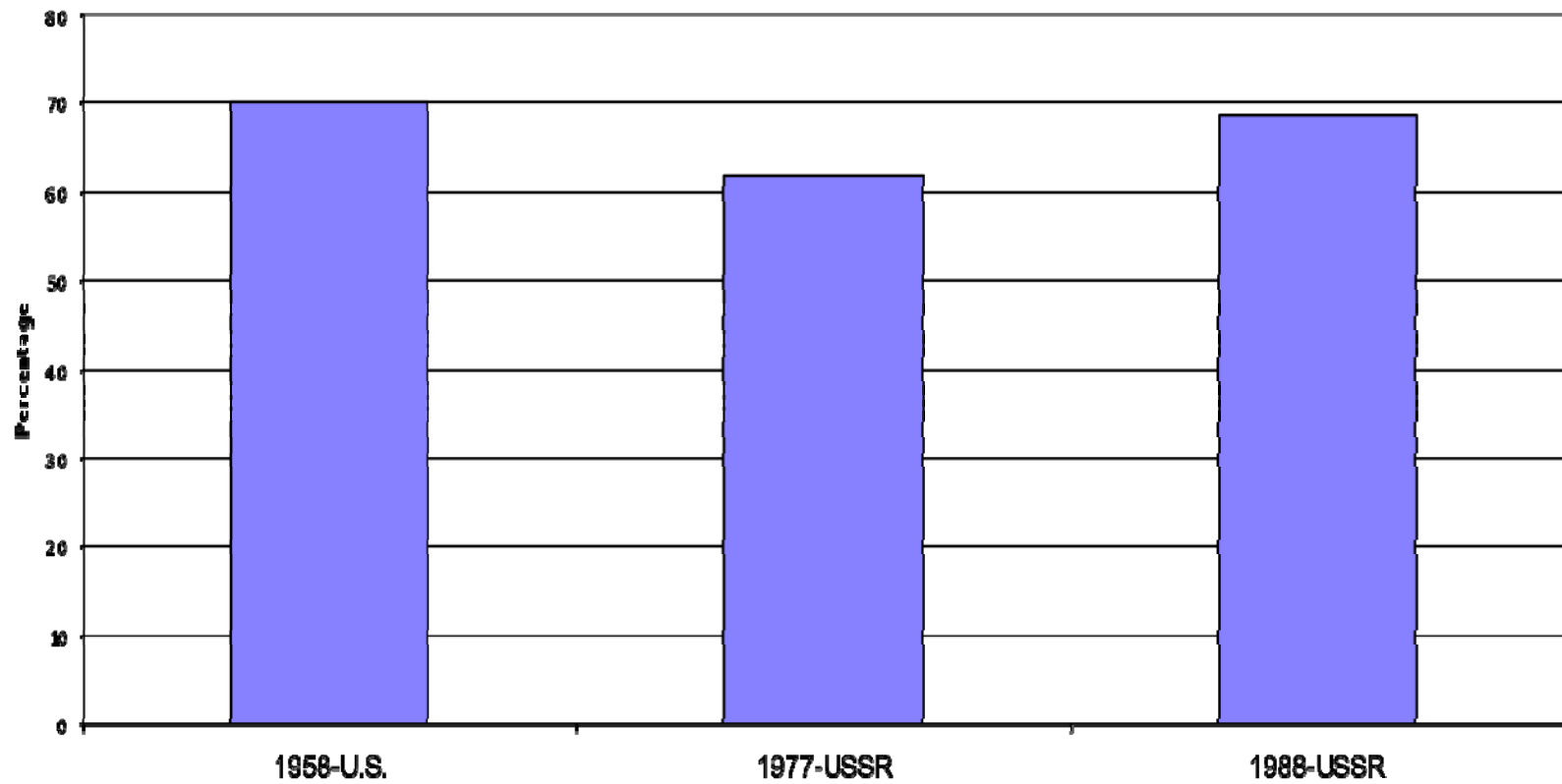
Co-Chair

*Harvard University Cuban Studies Program*

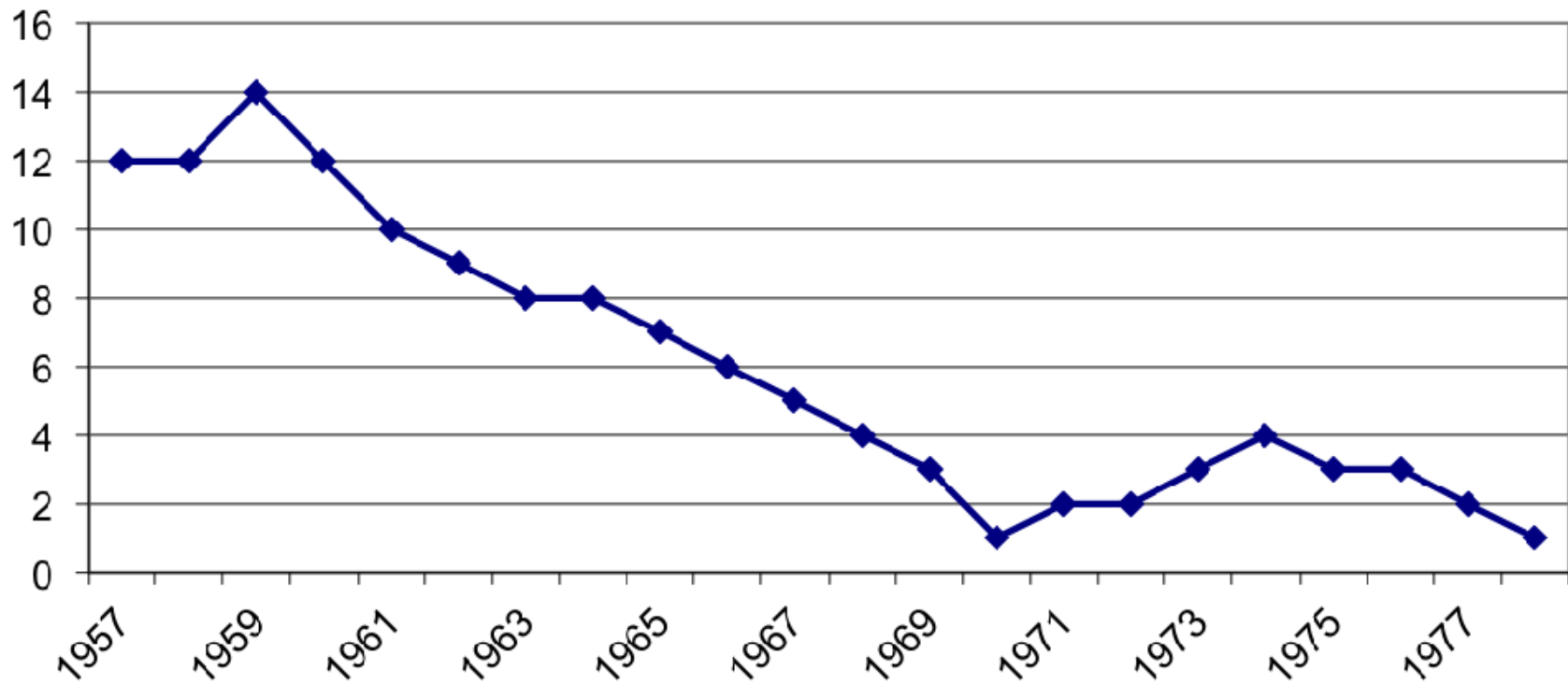
## Percentage of Sugar in Cuban Total Exports



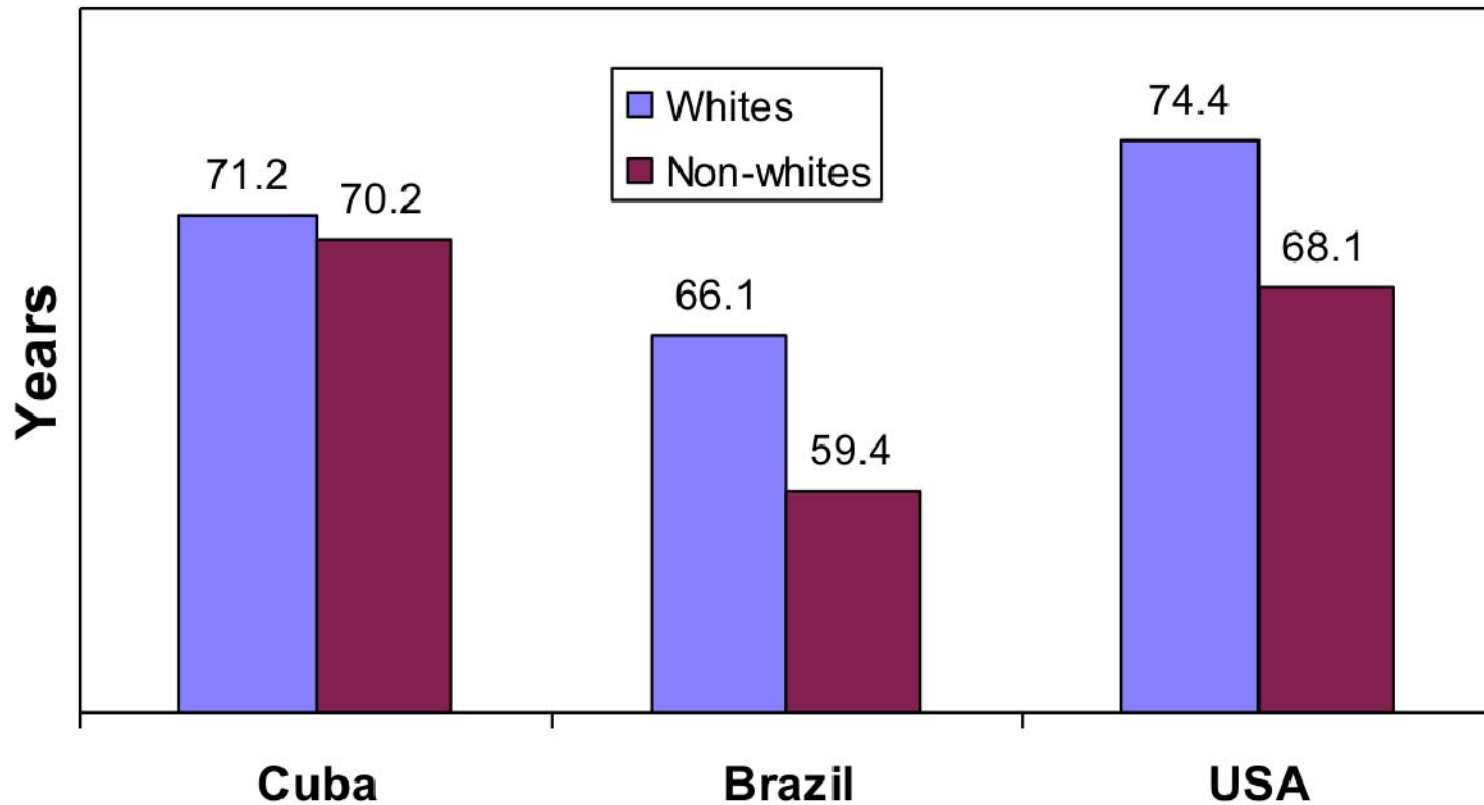
## Exports to Main Market (US, USSR)



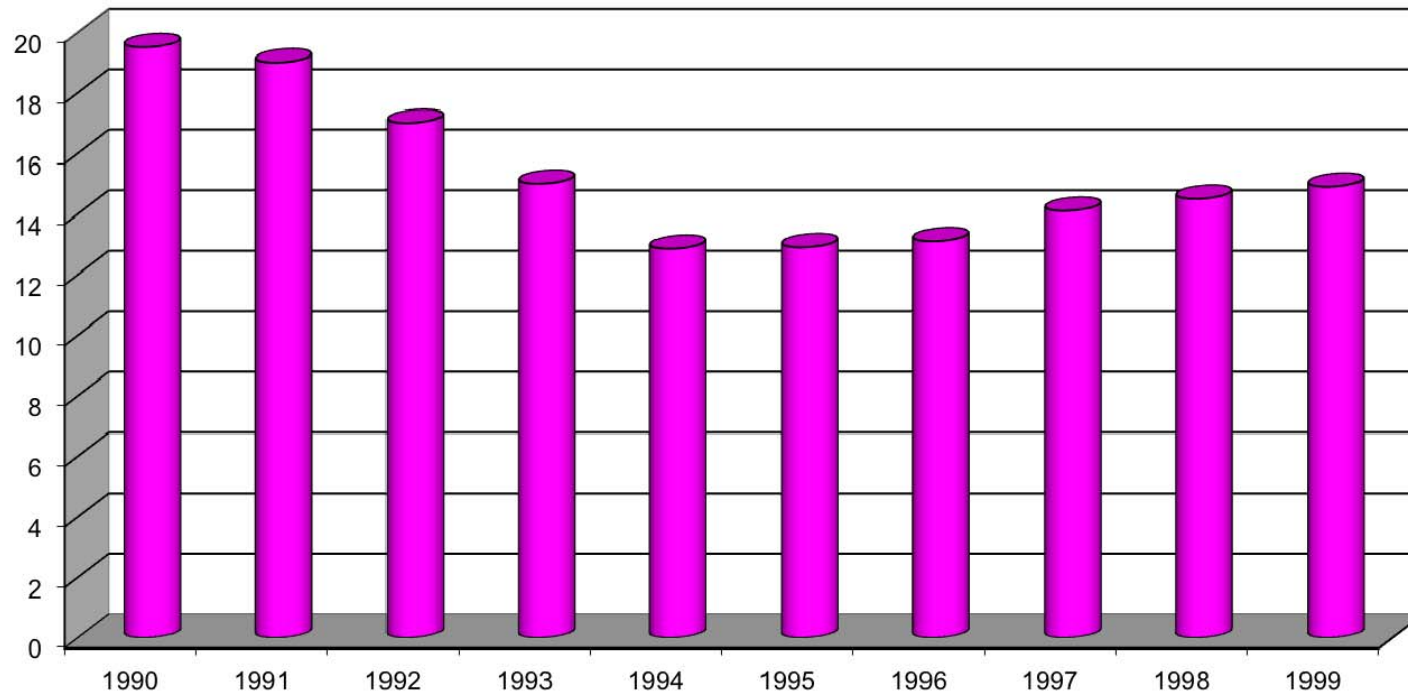
## Unemployment in Percentages, 1957-1978



## Life Expectancy, ca. 1980

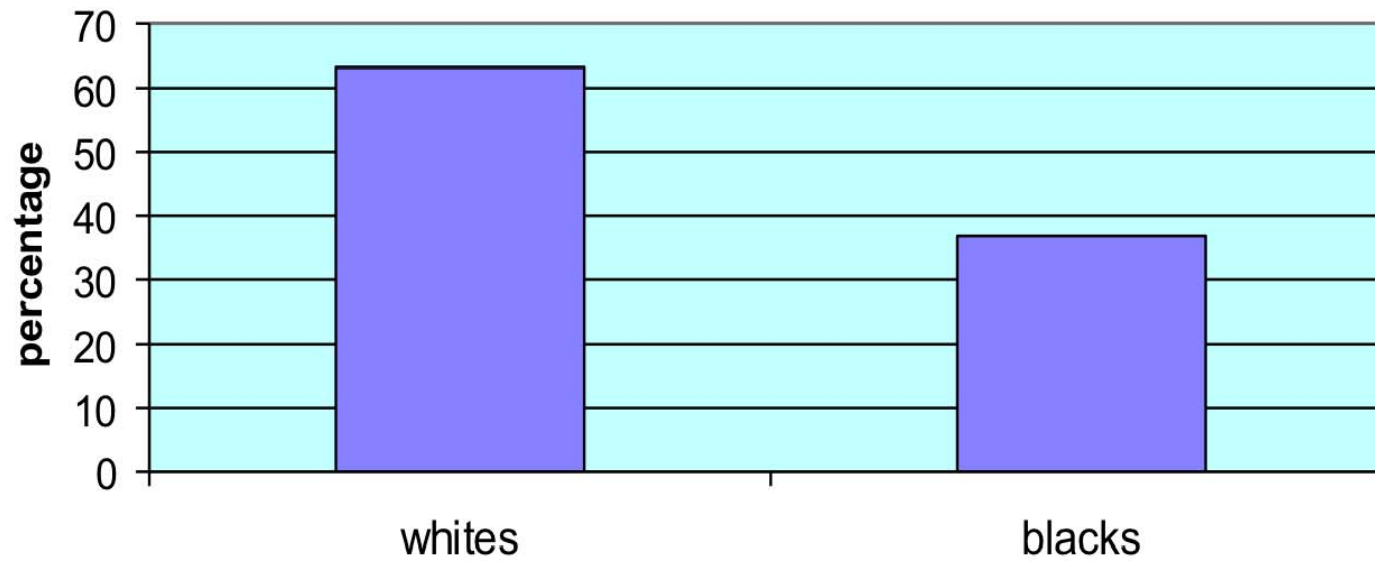


**GDP, billion pesos**



## Households with Relatives Abroad

(2000 Survey; Source: Blue 2006)









# Questions?

Contact us:

[pac@pac.org](mailto:pac@pac.org)

U.S. Office: (202) 787-5950

Brussels Office: (+32) 496-20-14-16

Find us online:

[www.facebook.com/PublicAffairsCouncil](http://www.facebook.com/PublicAffairsCouncil)

Twitter: @PACouncil